

HDTM-VT-4 PAIR TO HDTF-RA-4 PAIR MATED VIEW

DO NOT
SCALE FROM
THIS PRINT

DESIGNED & DIMENSIONED
IN MILLIMETERS [INCHES]

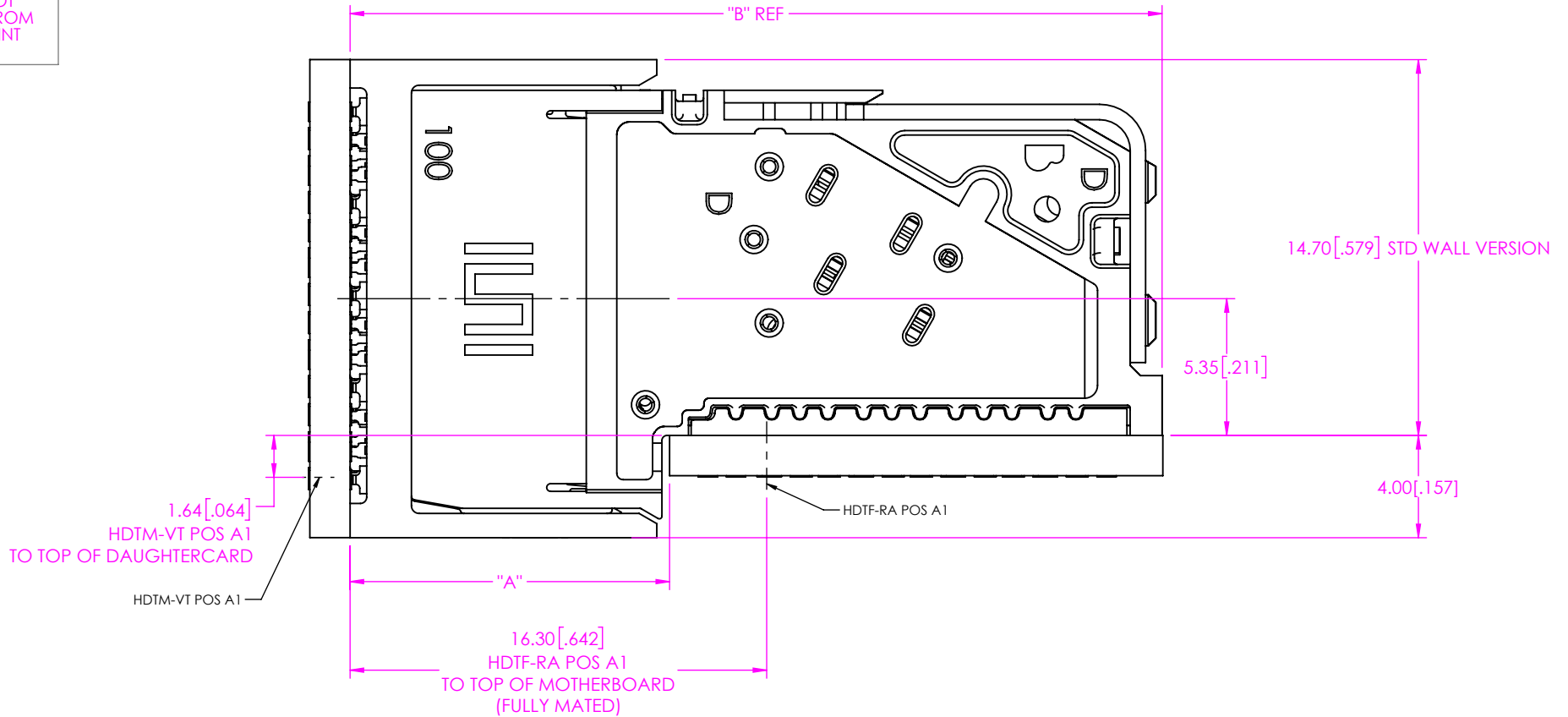


TABLE 1

CONNECTOR COMBINATION	HDTM STAGE COMBINATIONS	"A" FULLY MATED	"A" MAX	"B" FULLY MATED	"B" MAX	MIN SIGNAL WIPE	MAX SIGNAL WIPE	MIN GROUND WIPE	MAX GROUND WIPE
HDTF-RA / HDTM-VT-X-X-1	3mm SIGNAL / 4mm GROUND	12.50 [.492]	15.02 [.591]	31.80 [1.252]	34.32 [1.351]	0.38 [.015]	2.90 [.114]	2.18 [.086]	4.70 [.185]
HDTF-RA / HDTM-VT-X-X-2	2mm SIGNAL / 4mm GROUND	12.50 [.492]	14.02 [.552]	31.80 [1.252]	33.32 [1.312]	0.38 [.015]	1.90 [.075]	3.18 [.125]	4.70 [.185]
HDTF-RA / HDTM-VT-X-X-3	3mm SIGNAL / 3mm GROUND	12.50 [.492]	15.02 [.591]	31.80 [1.252]	34.32 [1.351]	0.38 [.015]	2.90 [.114]	1.18 [.046]	3.70 [.146]
HDTF-RA / HDTM-VT-X-X-4	2mm SIGNAL / 3mm GROUND	12.50 [.492]	14.02 [.552]	31.80 [1.252]	33.32 [1.312]	0.38 [.015]	1.90 [.075]	2.18 [.086]	3.70 [.146]
HDTF-RA / HDTM-VT-X-X-5	2mm SIGNAL / 2mm GROUND	12.50 [.492]	14.02 [.552]	31.80 [1.252]	33.32 [1.312]	0.38 [.015]	1.90 [.075]	1.18 [.046]	2.70 [.106]

NOTES:

- ALL DIMENSIONS BASED ON NOMINAL VALUES FOR SAMTEC RECOMMENDED PCB LAYOUTS.
- ALTHOUGH MAX DIMENSIONS ARE LISTED SAMTEC RECOMMENDS FULLY MATING COMPONENTS.

PROPRIETARY NOTE
THIS DOCUMENT CONTAINS CONFIDENTIAL AND PROPRIETARY INFORMATION AND ALL DESIGN, MANUFACTURING, REPRODUCTION, USE, PATENT RIGHTS AND SALES RIGHTS ARE EXPRESSLY RESERVED BY SAMTEC, INC. THIS DOCUMENT SHALL NOT BE DISCLOSED, IN WHOLE OR PART, TO ANY UNAUTHORIZED PERSON OR ENTITY NOR REPRODUCED, TRANSFERRED OR INCORPORATED IN ANY OTHER PROJECT IN ANY MANNER WITHOUT THE EXPRESS WRITTEN CONSENT OF SAMTEC, INC.



520 PARK EAST BLVD, NEW ALBANY, IN 47150
PHONE: 812-944-6733 FAX: 812-948-5047
e-Mail info@SAMTEC.com code 55322